

CEO'S Message

This summer is certainly not the best we have had in Wellington, although the end of February and beginning of March have provided a glimmer of hope. Despite the poor weather, the marina has been busy and we have had a productive and successful first six months of this financial year.

Half year performance

While the poor start to summer and the impact of the earthquake have had an impact on our performance, overall the trends have been good.

Boat storage income has only averaged 89%, with 12m berths still languishing at around 72.5% occupancy. All other sizes are in the high 90% occupancies. Trailer parks are in high demand and now 100% full with a waiting list.

The hardstand has exceeded expectations this year and is well ahead of budget. In fact the income is 33% ahead of last year's income at this time. We are now getting repeat bookings from the Chatham Islands and contractors are using our hardstand as the place of choice to do their work on boats from other parts of Wellington.



With four of the Wellington Marine Centre tenancies renewing their leases for another three years and Unit 3, our workshop/spray booth operating at 75% occupancy, the facility is right on budget.

Income from the launching ramp is slightly down due to the poor summer but I expect this will improve as March and April provide some better weather.

Overall we are only slightly down (\$20k) on budgeted profit for the six months and if it hadn't been for the unexpected expenses we incurred in making repairs after the earthquake we would have achieved our year to date profit.

Drone policy on the Marina

Recently a number of drones have been flown over and around the marina. Three of these have been contracted by the marina to take aerial videos of the marina, the most recent



being last week. I have been asked if Seaview Marina has a policy for licensees or the general public wishing to fly a drone over Seaview Marina's property. The Board has adopted the NZ Policy which requires approval from the owner of the property before flying a drone over the site.

If there is a legitimate reason for the use of a drone at Seaview Marina I will have no problem approving their use. If the drone is only being used for recreational purposes then this would not be approved.

Best wishes
Alan McLellan

Inside

Wellington Boat Show • 24 Hour Endurance Race • Compass Coffee expands • new fuel supply system update • marina upgrades and improvements since July 2016 • Lowry Bay Yacht Club News • marine pests • what to do with your waste liquids • drone policy • and more...

Latest repairs and upgrades

Post-earthquake repairs completed

Contractors from PCL have been repairing damage to tarseal caused by the 14 November earthquake.

The area in front of the Lowry Bay Yacht Club has been replaced with new seal and it is a big improvement to what was there before the quake.



They have also been 'strapping' the cracks that appeared in much of the tarseal from Entrance 2 and are also repairing the gaps that formed between the concrete and the tar seal on the hardstand. In total the earthquake has cost the marina around \$20k.



New laundry additions

After ten years of hard use our washing machines in the ablution block have given up the ghost. To replace these and cater for higher use we have installed three new combined washing machine/driers. This now provides our liveaboard customers with three washing machines and five driers.



Diesel pump teething troubles fixed

Some of you may have had frustrating time trying to use your credit card to take fuel from the new diesel pump facility. Unfortunately the equipment which reads the cards and transmits the data has had a bug.



Last week the software was upgraded and since then there have been no issues. We will continue to monitor the system but if you have any difficulties taking diesel from the pump using your credit card please contact the office immediately. Please accept our apologies for any inconvenience caused by these problems.

Pole moorings to be removed

You may have noted that the pole moorings no longer have any boats moored on them.

After giving all vessel owners 12 months notice, their vessels have been moved to allow the marina to remove the piles.



In the past we have had to rely on a contractor from Auckland to do this work but now we have a Wellington-based firm, Underwater Solutions, who have a suitable barge.

Underwater Solutions will be pulling the 40 piles in the next month or two. This will make way for the planned berth expansion to the south of the marina basin. At the moment this is not being considered for this financial year, but we hope that some additional berth development will begin some time during the 2017/2018 period.

Help us 'FIX IT'

Marina staff are always keen to keep on top of maintenance around the marina. As Seaview Marina is a large site, your help in reporting faults and maintenance issues is appreciated.

To ensure issues are dealt with promptly please report all faults or maintenance matters, including details of the problem and the location, to the office staff or by email to:

fix@seaviewmarina.co.nz

Emails will receive an acknowledgement and your request will be logged on the marina website. To follow the resolution of any issue raised please go to www.seaviewmarina.co.nz and click on 'About Our Marina', then 'Maintenance'.

Details and costs of marina improvements during the current financial year

Since 1 July 2016 the Seaview Marina Board has approved a number of upgrades to provide our customers with additional or improved services and facilities. The table below shows the capital items purchased over the first six months of this financial year (the figures have been rounded to the nearest thousand dollars).

ITEM	REASON
Launching ramp surface reseal	After 20 odd years of use the parking area surface had deteriorated badly.
New pole and improved lights on the central causeway	The existing light pole just south of the office was on a lean and the lights were not effective.
Installed three new washing machine/driers	After 10 years of use both washing machines needed replacing and licensees advised that additional driers would also be an advantage.
New credit card operated diesel facility installed	The demand for a 'user operated' facility with credit card payment has long been a facility both SML and our licensees have wanted.
Automation of Burnsco gate onto the hardstand	Health and safety issues required the hardstand to be secured from unauthorised access.
Mobile effluent pump-out unit	Purchase to cover effluent pump-out of boats and for use as an emergency pump where a vessel may be taking on water.
Travel lift strops and wire cable replacement	The safe operation of the Travel Lift requires replacement of strops and the wire cables. This is programmed into our maintenance schedule.
Purchase of a container to provide SML with more storage.	To comply with Health and Safety regulations and provide more storage a new container has been purchased. Tony Kelly has divided it in two to provide for both general and chemical storage.
Ten new pier trolleys	Additional pier trolleys were purchased for customer convenience.
New sewage pump and controls for Wellington Marine Centre	The original sewage pumping equipment needed upgrading to improve the efficiency and ease of maintenance.
Upgraded signage	Standardised signage has replaced all the old signs around the marina. All future signs will comply with the new format.
Replacement of low growing plants in front of the Wellington Marine Centre	The growth of the original flaxes and cabbage trees had reduced the visibility of the units on the Port Road side of the Wellington Marine Centre. The existing planting was removed and replaced with low growing vegetation.
	TOTAL SPEND \$233,000

I think you'll agree that this expenditure has provided the marina with much improved facilities.

Future improvements in the pipeline include:

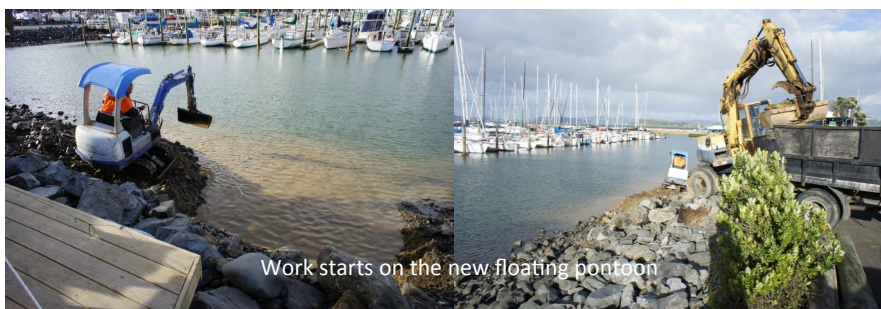
- Widening the boatyard dockway to provide lifting of wider beamed vessels.
- Adding a floating maintenance pier along the breakwater at the southern end of the boatyard, parallel to the breakwater.
- Improvement of the lighting on the boatyard, especially along the boundary fence.
- Upgrading the gates on A,B,C and D piers to the type of gatehouse used on Piers E,F,G and H.
- Completion of the walkway on the west side of the central causeway alongside piers A to E .

Compass Coffee to expand

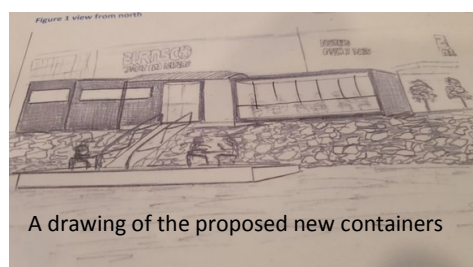
Compass Coffee Seaview started serving fantastic coffee on 15 November 2016, the day after the earthquake and the start of the big floods. Owner Michael Meads saw the potential for a coffee cart here and the Board was happy to support him to get his business established.

Compass Coffee is already proving a real success for both our own licensees and an increasing number of the general public. Even the local wildlife have learnt about the café and regular feeding by Michael has led to schools of small fish, swans and stingrays waiting below the café deck for titbits and proving a real attraction for café patrons.

There are new plans to improve and enlarge the coffee installation even further. Work has already started on a 3.6m x 6m floating pontoon to allow access to the coffee cart from the water. Boats will be able to pull up alongside the café and pick up a coffee, ice cream, snack or cold drink to take with them. Vessels up to 12m and draft of 2m will be able to comfortably tie up alongside for a short stay. Tables and chairs will be placed on the floating platform to offer Compass customers a unique site to have a coffee or snack.



Work starts on the new floating pontoon



A drawing of the proposed new containers

Two containers will be installed at a future date, one which will replace the coffee cart and provide a larger kitchen and serving space and another to give undercover shelter for patrons. Between the two will be a polycarbonate roof.



**Coffee and Food at
Seaview Marina
(opposite Burnsco)**

**Open 7 days
Mon-Fri 7:30am-4:00pm
Sat-Sun 8:30am-4pm**

**Serving Mojo coffee, teas,
cold drinks,
Foxton Fizz,
real fruit smoothies,
slices, muffins, Italian
style gelato,
gourmet pies and
our world famous
sausage rolls.**



Defibrillators Save Lives

This information could save your life, or that of a fellow boatie— we have a defibrillator on site.

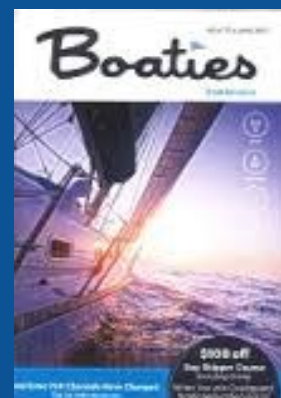
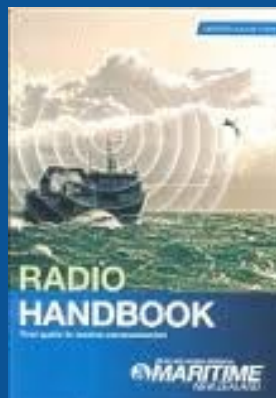


The defibrillator, which used to be located in the marina office, has been moved to a cabinet on the landing just outside the office door. Instructions detailing how to access the unit are printed on the front of the cabinet.

A defibrillator is a life-saving machine that delivers an electrical stimulus to the heart to re-start or stabilise heart function.

All marina staff are fully trained in the use of our defibrillator but any non-trained operators can use it as the unit has full instructions and a voice prompt.

Free Boaties Information booklets



The 2017 Boaties Book and the latest Radio Handbook are now available.

Get your free copy from the marina office

BURNSCO

THE JOURNEY STARTS HERE

Seaview Branch

100 Port Road, Seaview Marina

Ph. 04 586 6955

Monday to Friday: 8:30am to 5:30pm

Saturday & Sunday: 8:30am to 5:00pm

55% OFF!



~~\$229.99~~
\$99.99

Echo 201dv Fishfinder

5 inch, 320 x 480 pixel screen, 77/200kHz transducer, ClearVu, includes transom transducer

38998

SAVE \$450



~~\$849.99~~
\$399.99

OS1 Offshore Jacket

Waterproof, highly breathable, ultra high collar, superior wrist seals and storm hood for the ultimate protection, M, L and XL only

28593

GET MORE DEALS

Pick up our March Sale Catalogue for hundreds more great deals!

Get up to
60% Off



Pricing expires 02/04/2017

www.burnsco.co.nz

seaview@burnsco.co.nz

wellingtonboatshow.co.nz

6 - 9 April 2017

0275 623 093
0274 814 782

WELLINGTON BOAT SHOW



WELLINGTON BOAT SHOW UPDATE

WITH LESS THAN A MONTH TO GO

NOW IS THE TIME TO:

**Eat, Sail & be entertained at the
Wellington Boat Show
from 6 - 9 April**

Exhibition stands are filling and with Christmas now behind us, general interest is increasing.

Organisers have been busy working with the Hutt City Council to get the marketing through billboards, posters, social media, print and radio in place and this is looking great.

A used trailer boat section is a new initiative and the sites are proving popular @ \$200 plus GST for the 4 days with boaties upgrading and looking at new trailer boats.

If you wish to come to the show, buy tickets online at

I-Ticket or visit the Wellington Boat Show website,
www.wellingtonboatshow.co.nz

If you are not on board and think you might like to be, please contact
margie.petherick@gmail.com
or you can call her on 027 4814782

Margie will be more than happy to discuss with you further and provide more information.

wellingtonboatshow.co.nz

6 - 9 April 2017

0275 623 093
0274 814 782

WELLINGTON BOAT SHOW



Security Upgrades

Over the last few weeks, seedigital, the firm responsible for marina security and monitoring, has been upgrading our pier cameras to high definition units.

These new cameras will provide much clearer pictures and make it easier to identify activities at the pier entrances.

In addition to these upgrades, two new camera positions have been added. The first is on the south east corner of the Wellington Marine Centre by the Burnsco shop corner (pictured below).



This provides a good view of the Lowry Bay Yacht Club's front doors, Entrance 3 from Port Road and the car parks between Burnsco and the clubrooms.

The other camera is located above the fuel pump at the south end of the hardstand. This is a 360 camera, which provides excellent coverage of any vessel fuelling at the dockway.

With the pump now able to be operated 24/7 by boat owners, Seaview Marina needs to be able to monitor the use of the facility.

The image below shows the view from the new diesel camera.





WELLINGTON

BOAT SHOW

&

24 HOUR ENDURANCE YACHT RACE

6 - 9 April 2017

SEAVIEW MARINA LOWER HUTT WELLINGTON NEW ZEALAND

EXHIBITOR ENQUIRIES WELCOME

Adults \$12 Children under 12 Free



www.wellingtonboatshow.co.nz

info@wellingtonboatshow.co.nz

24 Hour Endurance Yacht Race

Not long to go now. Yachties from the greater Wellington region will congregate on Seaview Marina to participate in the 24-Hour Endurance Yacht Race 2017 on 8 and 9 April. Interest in the race is gaining momentum with enquiries from as far afield as Gisborne and even the Royal New Zealand Navy is hoping to compete.

An event like this has never been done before in New Zealand and the stakes are high. Members of the Lowry Bay Yacht Club are working hard to make this unique event the success it deserves. We are fortunate to have the full support from Alan McLellan and his team at Seaview Marina, making sure that visiting yachts that participate in the race enjoy the friendly, welcoming atmosphere and making their stay a memorable experience.

At 12 noon on 8 April yachts will jockey for a favourable spot on the start line and a deafening gun blast from the club's mini canon will send them on their way – racing around Wellington Harbour for a solid 24 hours at a stretch, including the hours of darkness. This requires skill, tenacity and seamanship.

The yacht that sails the longest distance over the 24-hour period, corrected on handicap, will take away the trophy and a

handsome prize, compliments of our sponsors. Members of

Lowry Bay Yacht Club and their guests will be able to follow the race progress from two big electronic monitors, while consuming a beverage and enjoy some food.

The 24-Hour Endurance Yacht Race will coincide with the Wellington Boat Show to be staged at Seaview Marina 6-9 April. The organisers of the boat show expect several thousand visitors during the four-day event and car parking may be a bit tight, particularly on the Saturday 8 and Sunday 9 April. We therefore recommend that skippers and crew either arrange to be dropped off at the marina or car-pool as much as possible. No doubt there will be some celebrating after the race with a beer or a wine and drinking and driving is not a good combination. So, being picked up by a friend or family member or arranging a taxi is by far the best approach.

Entry forms and Notice of Race are now on LBYC's website: www.lbyc.org.nz

Don't leave your entry till the last moment. Get organised early. Remember the 7 P's principle – Proper Prior Planning Prevents P... Poor Performance.

Need crew? List your name and contact details on Lowry Bay Yacht Club website.

Need a yacht to crew on? Again, go to our website.

Any questions, email me on:
theo.muller@mm-research.com



Follow us

You Tube™

f Visit us on
Facebook

Seaview skiff impresses at Antique and Classic Boat Show

In previous issues of Waterline we featured the construction of a classic gentleman's skiff being built by boat builder Russell Smith at Seaview Marina.

The skiff, named *Summer Wine* in recognition of the advice and training Russell has received over many decades from older boat builders, joiners and furniture makers, was formally launched and named on 26 February at Seaview Marina.

The following week Russell took *Summer Wine* to the Antique and Classic Boat Show at Lake Rotoiti, Nelson Lakes. Both the judges and public recognised the skill and craftsmanship that Russell had put into the skiff and awarded him the trophy for Best Original Classic Row Boat and the Peoples' Choice Award for Best Boat.



Summer Wine will be on display at the Wellington Boat Show, Seaview Marina on 6-9 April.

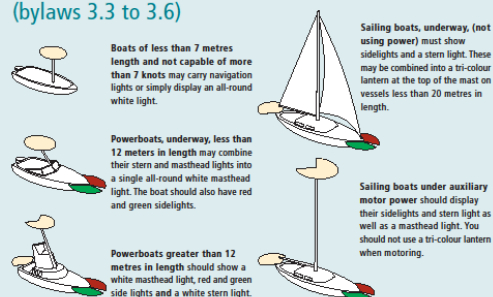
Russell Smith

Boat Builder
Maintenance and Repairs
Custom woodwork and fit outs
Wellington Marine Centre Unit 4b
Ph: 0212105157
russellsmith1946@gmail.com

Can you be seen?



Navigation lights must be shown from sunset to sunrise, and during conditions of restricted visibility.
(bylaws 3.3 to 3.6)



greater WELLINGTON
REGIONAL COUNCIL | Harbours

TOP 10 TRASH FOUND IN THE WORLD'S OCEANS



Source: International Coastal Cleanup 2012, Ocean Conservancy

Lowry Bay Yacht Club News



Whether cruising, racing or socialising Lowry Bay Yacht Club, based at Seaview Marina, continues to provide something for all boaties.

Cruising moorings that were installed for members throughout Wellington Harbour are being very well utilised now that good weather has arrived. The installation of these moorings by a group of Club volunteers, along with their renovations of the Clubhouse, were recognised at a national level late last year when the volunteers received a Yachting New Zealand service award and a mention on One News 'Good Sorts'.

The Club hosted the Ross 780 Nationals from 23-25 March, providing a high standard of racing for the fleet in great weather conditions for this highly competitive trailer yacht class. The lead changed each day, with Strait Enz from New Plymouth taking out the eventual honours. Josh Hayter and crew aboard Tatra Lass were placed third, making them the best placed of three Lowry Bay Yacht Club entries and first amongst 'owner drivers'.



Trailer yachts are an area where the Club would like to see more growth in its membership and the Club is happy to help Marina users to get their trailer yachts back out on the water. The same applies for all boaties, whether their vessel is power or sail. The Club's bar is a friendly place to pick up all sorts of advice and the Club will put people wanting more detailed assistance in touch with a member happy to help them.

The Club will be hosting the 24 Hour Endurance Race to coincide with the Wellington Boat Show (see separate articles). The Club will have information available at the Wellington Yachting Association display and will have the Clubhouse open for those wanting to come and see what the Club has to offer them.

Lowry Bay Yacht Club offers:

- ◆ Harbour moorings for short-term use (with generous support from Seaview Marina).
- ◆ Cruising for power and sail.
- ◆ Yacht racing- crew positions available, no experience needed.
- ◆ Bar and food.
- ◆ Shore-based fun and friendly members.
- ◆ Venue hire for business events and special occasions.
- ◆ Membership is just \$150 per year (that's less than \$3 per week).

Bar Hours

- ◆ Friday from 5pm—10pm, meals available from the restaurant.
- ◆ Saturday 4pm—6pm (subject to yacht racing taking place).

Contact:

Website: www.lbyc.org.nz

Email: info@lbyc.org.nz

Phone: 04 568-3715 or visit



Help us Control Marine Pests

Marine pests are spreading through central New Zealand but so far Seaview Marina has remained relatively free of problems.

"It will be the behaviour of Seaview berth holders and visitors from away that will decide whether this remains the case" said Peter Lawless, Coordinator for the Top of the South Marine Biosecurity Partnership who visited the marina recently.

The clubbed tunicate *Styela clava* (pictured right) is now well established in Nelson and Tarakohe and gaining a foothold in Picton and Pelorus Sound. This sea squirt is now being found on marine farms in Golden Bay and the Marlborough Sounds. Although this pest collapsed the mussel farming industry in Nova Scotia Canada at Prince Edward Island, mussel farmers in the Hauraki Gulf appear to be coping with infestations there.



How it will go in the top of the South Island is something we will find out over the coming years. A summer survey of boat hulls found the clubbed tunicate on a significant number of vessels in the Abel Tasman and all of these followed the same pattern. All

were from the Nelson marina, and all were relatively clean but had the sea squirts on the bottom of the keel where there was little or no antifouling. This means that boats from Nelson now pose a risk to clean locations such as Seaview.

"The other pest of concern is the Mediterranean fanworm *Sabella spallanzii*. This was well established in Auckland and Lyttleton but has now spread to Picton, Nelson and Tarakohe and the councils there have active suppression programmes that are keeping it at low levels.



This means that all marinas, including Seaview Marina, are being vigilant about boats coming from elsewhere and will require high standards of vessel hygiene for boats that visit areas with marine pests. We recommend you check with any marina before visiting. They may require proof your vessel has been recently hauled out or antifouled before allowing you to berth at their facility.

For more information visit the TOS Partnership website at <http://www.marinebiosecurity.co.nz/>



**Unit 1, Wellington Marine Centre
100 Port Road, Seaview,
Lower Hutt
WELLINGTON**

Phil: 021 648 304

Ph: 04-568 8062,

Fax: 04-568 8072

Straitmarine@straitmarine.co.nz

www.straitmarine.co.nz

Recognised member



Authorised Dealers for:

**Volvo Penta
Yanmar
Cummins Onan**



Focus on the environment

Visiting a Northland marina this summer?

To prevent the spread of marine pests, Northland marinas require visiting vessels to have been recently cleaned – that means:

Antifouled in the last **six months**



Lifted and washed in the last **one month**



or

Prove it! Haul-out receipts, paint receipts – check with the marina what proof is required. Some high-risk vessels may be subject to additional marina requirements.

Coming from the Auckland Region? Beware of unwanted hitchhikers! Auckland is a high-risk area for Mediterranean fanworm, a highly invasive marine pest.

Bookings and Information

To find out more about the clean hull requirements or make a booking, contact us:
 Whangaroa Marina: 09 405 0505, admin@whangaroamarina.co.nz
 Bay of Islands Marina (Opua): 09 402 7124, enquiries@boimarina.co.nz
 Kerikeri (Cruising Club) Marina: 09 407 9434, info@kerikericruisingclub.org.nz
 Tutukaka Marina: 09 434 3441, marina@tutukaka.co.nz
 Whangarei Marina: 09 438 2033, whangarei.marina@xtra.co.nz
 Riverside Drive Marina (Whangarei): 09 438 2248, rdm@riversidedrivemarina.com
 Marsden Cove Marina: 09 432 7740, info@marsdencovemarina.co.nz

Bay of Islands Marina

Whangarei Marina

RDM



With support from
NORTHLAND REGIONAL COUNCIL

Whangaroa Marina

What **NOT** to do with your waste liquids

Seaview Marina provides our customers with two waste oil collection drums - one on the boatyard and the other in the container opposite D Pier.

Please note—These drums are for WASTE OIL ONLY. We do not provide a facility on site for disposing of any other liquid waste. Please dispose of this material off-site at the appropriate facility.

Unfortunately the sight below is becoming all too common—our waste oil drum surrounded by empty containers of oil, diesel, bilge water and other unlabelled liquids. In addition, people are dumping other liquids inside the drum and contaminating the oil.



The waste oil is a valuable resource and can be recycled. If the drum is not contaminated it is emptied for free.

If it is contaminated with other liquids it cannot be recycled and we (i.e. you) have to pay for the removal of the waste.

We do not know if this problem is being caused by marina customers or outsiders but we ask for your help in identifying those responsible.

Please contact the office with details or car registrations of any persons seen dumping containers of liquids or any other rubbish outside the bins.

Thank you for your co-operation

PLASTIC IN THE OCEAN
OUTNUMBERS SEA LIFE
SIX TO ONE.



©Jan Van Woe

VanWoe | www.vanwoe.com



TOUGHGUARD®

Nano Surface Protection

**professional cut and polish on your
boat/launch**

- **Restore and retain that stunning showroom shine**
- **Get rid of oxidation, and protect your expensive asset**
- **3 year warranty**
- **Premium level UV protection**

Call Brent on 027 450 5504
wellington@toughguard.co.nz
www.toughguard.co.nz

A message for trailer park customers

We have noticed that some vessels in our trailer parks are not secured properly. In strong winds this can mean that your vessel can move sideways into adjacent boats or, as seen during one big storm, roll forwards out of the park towards the boats on the opposite side of the compound.

- Please ensure your draw bar is chained to the galvanised ring at the front of your park to prevent the jockey wheel from moving sideways (as per the image below).
- Clamp or chock your trailer wheels to stop forward/backward movement.
- Park your boat inside the marked lines so you don't cramp your neighbour.



MG COMPOSITES

Matt Gottard
M: 021 121 4151
E: matt.gottard@mgcomposites.co.nz

**QUALIFIED SPECIALIST IN COMPOSITE
CARBON FIBRE, KEVLAR & FIBRE GLASS**

**BOATBUILDER MARINE REPAIRS
BUILDING & CONSTRUCTION**



WE ARE NOW 1 IN WELLINGTON

Dean Hoare

Phone 021841199

deanhoare@nzboatsales.com

www.nzboatsales.com www.gulfgroup.co.nz



Your one-stop shop for

- Fishing Charters
- Fish bait and tackle sales
- Rod and reel servicing
- Open 7 days through summer
- 8:30am-5:30pm Monday to Friday
- 7am-4pm Saturday/Sunday

Pete Lamb Fishing
ph: 0274439750

Charter bookings and Seaview Shop:
Phone: 04 5894326
Rongotai shop and wholesale bait
Phone: 04 3878150

www.petelambfishing.co.nz



Seaview Marina Hours & Contact Details

Office Hours 8am-5pm, Monday to Friday
8:30am-12 noon, Saturday
Boat Yard Hours 8am-5pm, Monday to Saturday
Office Phone: 04-5683736 **Fax:** 04 5683586

Staff

CEO:

Alan McLellan M: 027 443 5330 E: alan@seaviewmarina.co.nz

Marina Administrator:

Suzanne Willis M: 0275 995 857 E: suzanne@seaviewmarina.co.nz

Assistant Administrator:

Alison Watt M: 021 449 845 E: alison@seaviewmarina.co.nz

Boat Yard Supervisor:

Mike Croft M: 0275 022 888 E: mike@seaviewmarina.co.nz

Maintenance Dockhand:

Tony Kelly M: 0274 102 196 E: tony@seaviewmarina.co.nz

